

# A.M. REDDY

Memorial College of Engineering and Technology

Approved by AICTE, New Delhi, Affiliated to JNTUK, Kakinada

SPONSORED BY

ATLURI MASTAN REDDY EDUCATIONAL SOCIETY, REG. NO. 450/2003

An ISO 9001:2015 Certified Institution

Web : [www.amreddyengineering.ac.in](http://www.amreddyengineering.ac.in)

E.mail: [principal.amreddyengineering@gmail.com](mailto:principal.amreddyengineering@gmail.com)

The present-day need and trend is utilizing green sources of energy to reduce carbon footprints and create a sustainable future. In this regard, the Indian government is also encouraging the same with subsidies. Better late than ever, it's time to protect nature by utilizing green energy in place of fossil fuels. In this aspect, AM Reddy Memorial College of Engineering and Technology has taken the lead in reducing carbon emissions.

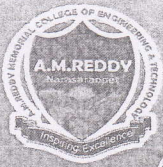
The college has a G+3 building with spacious classrooms, laboratories, wide corridors, and stairs on every floor. Other than these, there are staff rooms, a library, five audio-visual rooms, one spacious multipurpose hall (used for various events), administrative blocks, canteen, separate common rooms for student's toilets. The non-LED lights are gradually being replaced by LED tube lights and spotlights, with the goal of making the college fully energy-efficient.

The Institution has facilities for

### **1. Alternate sources of energy and energy conservation measures are:**

- Most of the class rooms are well ventilated and allow broad day light without a need for any artificial lighting.
- All the classrooms, laboratories, seminar halls and washrooms use LED lights which reduces the consumption of electricity overall.
- Lights and fans are switched off after completion of the classes so that the use of electricity can be minimized.
- All the Air conditioners (ACs) which were more than ten years old were replaced by new better energy efficient ceiling mounted Inverter based split ACs of 1, 1.5 and 2 TR. These ACs are of 5 star ratings based on usage.
- All computers installed at different sections of the college have LED monitors. It helps in conservation of electricity.
- We installed solar street lights in the campus as college is located in overly warm place so that the natural solar energy is being utilized effectively.
- In most of the rooms and offices, new wiring works have been taken in the place of old wiring to minimize transmission loss.
- To remind the importance of power savings amongst the students, they were instructed to "Turn off" lights and fans while they come out of the class rooms and "unplug instruments" when not in use.
- Every evening, the watchman will go around the college to verify whether all the lights and fans have been switched off or not.





# A.M. REDDY

Memorial College of Engineering and Technology

Approved by AICTE, New Delhi. Affiliated to JNTUK Kakinada

SPONSORED BY

ATLURI MASTAN REDDY EDUCATIONAL SOCIETY, REG. NO. 450/2003

An ISO 9001:2015 Certified Institution

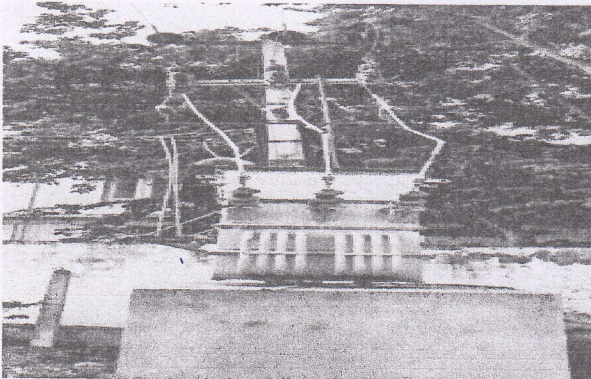
Web : [www.amreddyengineering.ac.in](http://www.amreddyengineering.ac.in)

E.mail: [principal.amreddyengineering@gmail.com](mailto:principal.amreddyengineering@gmail.com)

Photos of Solar street lights, LED monitors, LED lights in seminar halls, class rooms, office rooms, Principal room and Board room etc.



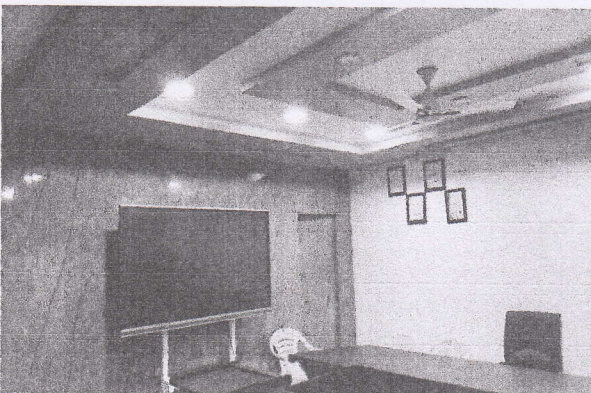
LED bulbs are used in seminar hall



Power input from APSEB



LED street lights at the entrance gate



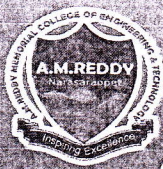
LED bulbs at the board room



Solar panel for bore well and street lights

Principal  
A.M. REDDY MEMORIAL COLLEGE OF  
ENGINEERING & TECHNOLOGY  
PETLURIVARI PALEM  
rasaraopet (Mdi), Guntur Dist.





# A.M. REDDY

Memorial College of Engineering and Technology

Approved by AICTE, New Delhi, Affiliated to JNTUK-Kakinada

SPONSORED BY

ATLURI MASTAN REDDY EDUCATIONAL SOCIETY, REG. NO. 450/2003

An ISO 9001:2015 Certified Institution

Web : [www.amreddyengineering.ac.in](http://www.amreddyengineering.ac.in)

E.mail: [principal.amreddyengineering@gmail.com](mailto:principal.amreddyengineering@gmail.com)

## 2. Management of Various types of degradable and non-degradable waste:

Maintaining the campus in immaculate condition to create a welcoming environment for academic and extracurricular activities is one of the institution's guiding principles. The parties involved adhere to sound hygiene standards and a detailed waste management strategy. The main focus is on reducing, reusing, and recycling garbage produced within the campus.

The solid waste generated on the college campus comprises litter, paper, plastic, cloth, glassware, food, and sanitary products. To avoid this unhealthy environment and to promote a healthy environment on the college campus, our campus maintenance committee has well planned a waste management strategy in order to create and maintain a self-sustaining and healthy environment on the campus.

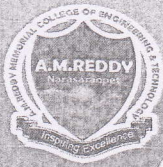
The college provides various trash cans for various waste types, including biodegradable, recyclable, and non-degradable. For the collection of solid trash produced at various sources across the college, green and red containers have been placed throughout the campus. In compost pits, organic waste is disposed of, digested, and repurposed into manure for the campus's trees and plants. On campus, plastic use is restricted to maintain a plastic-free environment.

The water transport system is routinely checked for leaks in pipes, taps, valves, and other components, and any found are swiftly repaired for liquid waste treatment. A 5,000-litre reverse osmosis plant is in use to ensure a clean and secure supply of drinking water. The water that the RO plant rejects is subsequently applied to plant life.

Students who participate in physical education are more likely to sustain minor injuries; hence, the administrative office carries a first-aid medical kit. Plaster and cotton gauze from the kit are disposed of with non-biodegradable garbage. To ensure there is no environmental risk, all e-waste, including computers and their accessories and other electronic garbage, is collected and disposed of through the approved vendor.

Hazardous chemicals and dyes are not used in the laboratory. In chemistry labs, diluted acids are utilized and discharged directly. When using a strong acid or base, it must first be neutralized before discharge. No radioactive substances of any sort or nature are used in the lab. The college's rigorous adherence to green and waste management systems has resulted in a well-maintained and pollution-free environment.





# A.M. REDDY

Memorial College of Engineering and Technology

Approved by AICTE, New Delhi, Affiliated to JNTUK-Kakinada

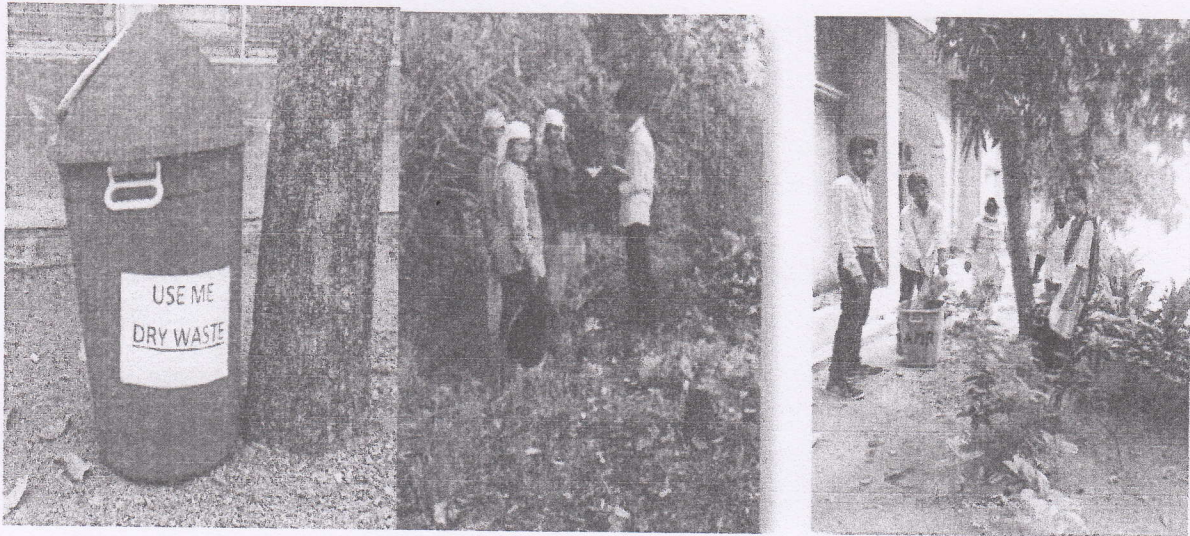
SPONSORED BY

ATLURI MASTAN REDDY EDUCATIONAL SOCIETY, REG. NO. 450/2003

An ISO 9001:2015 Certified Institution

Web : [www.amreddyengineering.ac.in](http://www.amreddyengineering.ac.in)

E.mail: [principal.amreddyengineering@gmail.com](mailto:principal.amreddyengineering@gmail.com)



Dry and Wet waste are collected separately in containers.



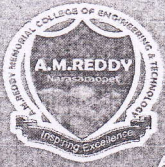
Photo of Solid waste like plant dry leaves, etc. bio degradable pit

“Photos of solid degradable and non-degradable waste management, liquid waste management and e-waste management etc.”

Principal

A.M REDDY MEMORIAL COLLEGE OF  
ENGINEERING & TECHNOLOGY  
PETLURIVARI PALEM  
Narasaraopet (Mdl), Guntur(Dt. ...)





# A.M. REDDY

Memorial College of Engineering and Technology

Approved by AICTE, New Delhi, Affiliated to JNTUK-Kakinada

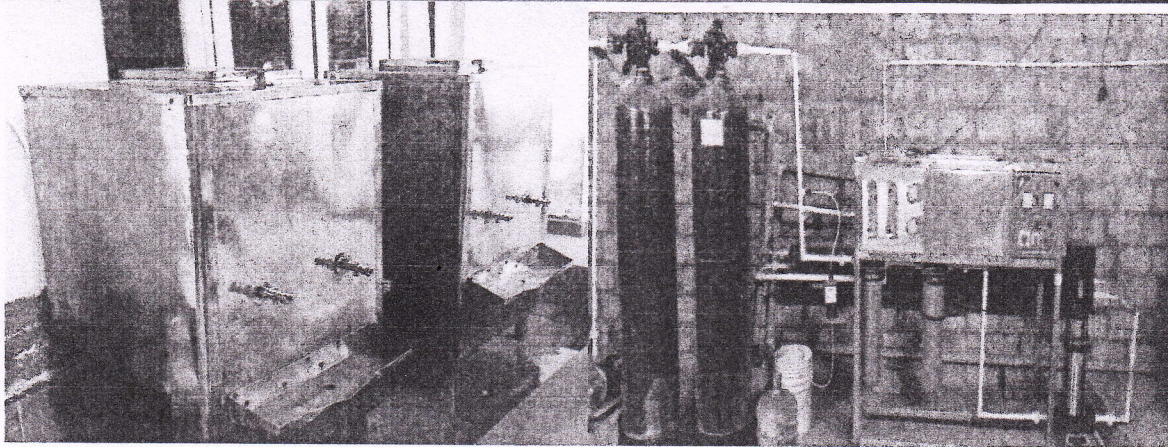
SPONSORED BY

ATLURI MASTAN REDDY EDUCATIONAL SOCIETY, REG. NO. 450/2003

An ISO 9001:2015 Certified Institution

Web : [www.amreddyengineering.ac.in](http://www.amreddyengineering.ac.in)

E.mail: [principal.amreddyengineering@gmail.com](mailto:principal.amreddyengineering@gmail.com)



RO water plant arrangement in the campus

### 3. Water conservation facilities available in the Institution:

Our college is maintaining a percolation pit on the college campus; it is also like a rainwater harvesting system. It is a low-tech form of a simple hole dug into the ground that facilitates groundwater recharge through the infiltration of surface runoff into the soil (or rock).

The primary purpose of a liquid waste sump is to collect and control the discharged water, ensuring that it does not spread into the surrounding environment and cause harm. Water waste from taps and withdrawals from RO are directly connected to the underground sump with the aim of recharging the groundwater level.

A percolation tank is an artificially created surface water body that is submerged in a reservoir of highly permeable land so that surface runoff is made to percolate and recharge the groundwater storage. So this percolation is very useful for storing all the rainwater. The purpose of this percolation tank is to recharge the groundwater storage, and hence seepage below the seat of the bed is permissible.

The ground water is pumped into the storage tanks located on the college campus. The water is distributed through a well-laid pipe network. Drinking water after treatment in the RO plant is supplied through a separate set of distribution pipes on campus, and water for all purposes is supplied through another set of distribution pipes.

The entire distribution is well supervised by the repair and maintenance department of the college to ensure that there are no leakages or wastes of precious water through joints, valves, taps, etc. Waste water usage is reduced using low-pressure flushes.





# A.M. REDDY

Memorial College of Engineering and Technology

Approved by AICTE, New Delhi, Affiliated to JNTUK-Kakinada

SPONSORED BY

ATLURI MASTAN REDDY EDUCATIONAL SOCIETY, REG. NO. 450/2003

An ISO 9001:2015 Certified Institution

Web : [www.amreddyengineering.ac.in](http://www.amreddyengineering.ac.in)

E.mail: [principal.amreddyengineering@gmail.com](mailto:principal.amreddyengineering@gmail.com)

Following are the major issues aimed for retaining water in the campus contamination free and provide a pure and safety supply of water at the campus.

1. Timely cleaning of all water bodies
2. Treatment of water for zero contamination
3. Efficient mechanism of supplying water to all academic, administrative blocks and hostels.



Liquid waste water management   Rain water conservation   Bore well in the campus

#### 4. Green campus initiatives:

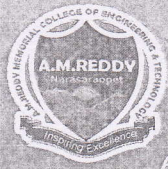
In order to create a green action plan and mainstream sustainable development and climate change in education, the institute will form a working group made up of engaged teachers and students. With the assistance of specialists, environmentalists, and the student community, for whom it would be an educational and sensitization process, the institute will permit collaborative documentation of its flora and fauna.

The numerous environmental factors for green technologies and a green environment must be investigated by the green committee. Monitoring the effectiveness of waste recycling, waste water treatment, and other water conservation techniques is also necessary. The green committee's goals are to decrease the campus's carbon and water footprint, improve the water quality and biodiversity, and occasionally update the green policy.

The institute must create a baseline of information on things like paper use, carbon footprint, garbage generation and disposal, and water use. The campus's organic and inorganic solid waste must be collected separately and disposed of in accordance with specified standards. Single-use plastics must be prohibited on campus.

As an extension of their studies, students will spread green and environmental consciousness in the neighborhood. Bring food only as needed to prevent wasting. To stop the accumulation of





# A.M. REDDY

Memorial College of Engineering and Technology

Approved by AICTE, New Delhi, Affiliated to JNTUK-Kakinada

SPONSORED BY

ATLURI MASTAN REDDY EDUCATIONAL SOCIETY, REG. NO. 450/2003

An ISO 9001:2015 Certified Institution

Web : [www.amreddyengineering.ac.in](http://www.amreddyengineering.ac.in)

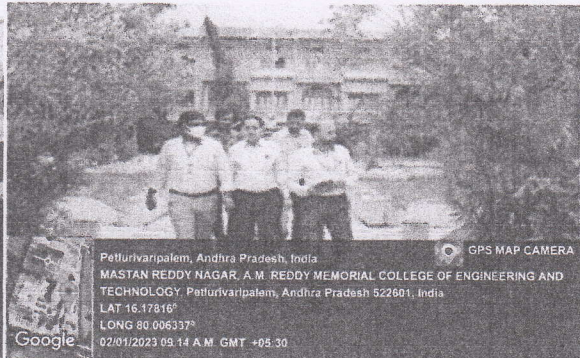
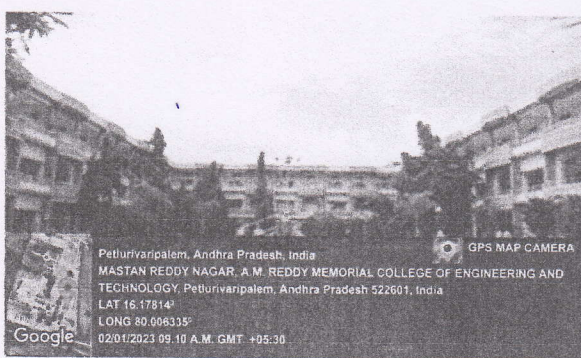
E.mail: [principal.amreddyengineering@gmail.com](mailto:principal.amreddyengineering@gmail.com)

plastic wastefrom used ballpoint pens, encourage the use of ink pens.Bring food and water in stainless steel containers, and stay away from using disposable items.

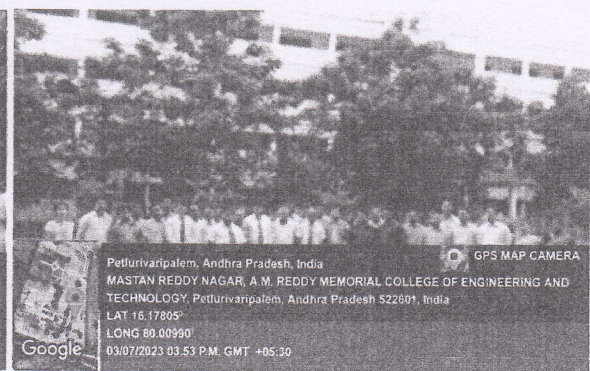
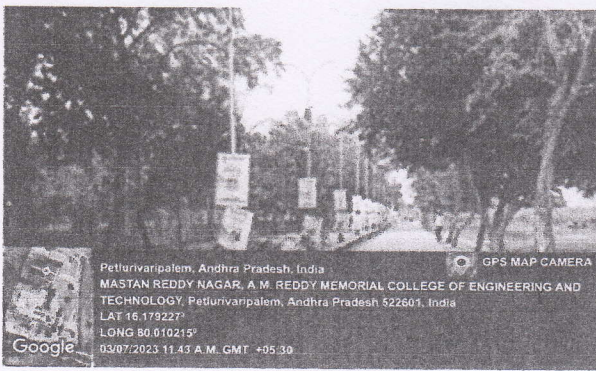
Provide facilities for the college to separate garbage into hazardous, non-hazardous, and biodegradable categories. While attending events where food is provided in public, avoid using paper and plastic cups and plates. Use washable, reusable utensils as an alternative. To be given to scrap traders, plastic and paper should be cleaned and separated.

Place used paper in a campus-wide Materials Recovery Facility rather than throwing it away. To ensure appropriate recycling, keep electrical and electronic waste in storage and occasionally give it to scrap dealers. Avoid using flex products like flowers covered in plastic during campus public events; instead, welcome dignitaries with flowers or books.

A "green campus" is a place where sustainable and eco-friendly practices are promoted through education and environmental friendly actions. By generating sustainable and inclusive solutions to the environmental, social, and economic requirements of humanity, the green campus concept offers the chance to take the lead in redefining its environmental culture and inventing new approaches.

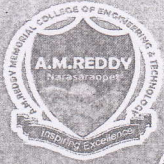


Photos of Students and staff walking on Pedestrian pathways



*Ca* Principal  
A.M REDDY MEMORIAL COLLEGE OF  
ENGINEERING & TECHNOLOGY  
PETLURIVARI PALEM  
Narasaraopet (Mdl), Guntur Dt.





# A.M. REDDY

Memorial College of Engineering and Technology

Approved by AICTE, New Delhi, Affiliated to JNTUK-Kakinada

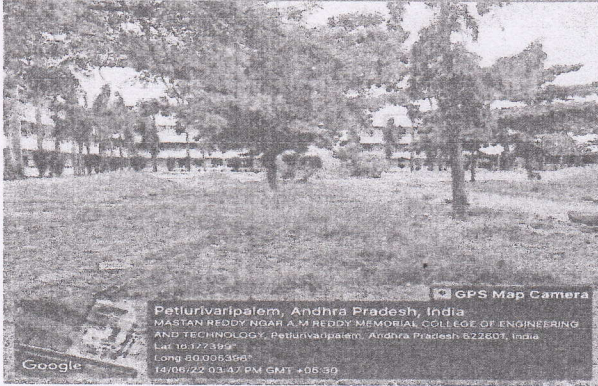
SPONSORED BY

ATLURI MASTAN REDDY EDUCATIONAL SOCIETY, REG. NO. 450/2003

An ISO 9001:2015 Certified Institution

Web : [www.amreddyengineering.ac.in](http://www.amreddyengineering.ac.in)

E.mail: [principal.amreddyengineering@gmail.com](mailto:principal.amreddyengineering@gmail.com)



Landscaping at different places of campus with full lush of green trees and Plants

## 5. Disabled-friendly, barrier free environment:

Almost all the sections where there are physically challenged students, classes will be conducted in ground floor.

- In any case, special support and care will be provided to them.
- Physically challenged students will be provided books in the ground floor.
- Wheel' chairs are to be purchased to meet the requirements of physically challenged persons.
- Visually challenged persons are provided with Braille material.
- Disabled friendly paths and railings.



Accessible washroom friendly toilets

Wheel Chairs for Disabled

*Principal*  
**Principal**  
 A.M REDDY MEMORIAL COLLEGE OF  
 ENGINEERING & TECHNOLOGY  
 PETLURIVARI PALEM  
 Narasaraopet (Mdl), Guntur Dt.

*Principal*  
**PRINCIPAL**  
 Principal  
 A.M REDDY MEMORIAL COLLEGE OF  
 ENGINEERING & TECHNOLOGY  
 PETLURIVARI PALEM  
 Narasaraopet (Mdl), Guntur Dt.