

**Competitive coaching
program
2019-20**



A.M. REDDY MEMORIAL COLLEGE OF ENGINEERING AND TECHNOLOGY

Approved by AICTE, New Delhi, Affiliated to JNTUK-Kakinada
Web : www.amreddyengineering.ac.in, E.mail: principal.amreddyengineering@gmail.com
VINUKONDA ROAD, PETLURIVARIPALEM(POST), NARASARAOPET, GUNTUR (DIST), ANDHRA PRADESH, PIN:522601, 08647-247190.

Narasaraopet,
Date: 28-12-2019

To
The Principal,
A. M. Reddy Memorial College of Engineering & Technology
Petulrivaripalem,
Narasaraopet

Respected Sir,

Sub: Request approval to conduct competitive coaching program on “How to crack GATE/PG-CET” for all third year students -Reg,

The training and placement cell officer is planning to conduct a program on “How to crack GATE/PG-CET” to all third year students on 06-01-2020 to 10-01-2020 for the benefits of the students. The resource person for this program is **Dr. G. Bhaskar Reddy**, Associate Professor, Nalanda Institute of Engineering & Technology, Narasaraopet. We request you to accord approval and grant the required amount for the smooth conduction of the program.

Thanking you sir

Yours Sincerely,

Coordinator: P. Imran Khan

Approved

Principal

A.M REDDY MEMORIAL COLLEGE OF
ENGINEERING & TECHNOLOGY
PETLURIVARI PALEM
Narasaraopet (Mdl),Guntur Dt .



A.M. REDDY MEMORIAL COLLEGE OF ENGINEERING AND TECHNOLOGY

ESTD: 2007

Approved by AICTE, New Delhi, Affiliated to JNTUK-Kakinada

Web : www.amreddyengineering.ac.in, E.mail: principal.amreddyengineering@gmail.com
VINUKONDA ROAD, PETLURIVARIPALEM(POST), NARASARAOPET, GUNTUR (DIST), ANDHRA PRADESH, PIN:522601, 08647-247190.

Date: 30-12-2019

CIRCULAR

It is to inform all B.Tech third year students that the training and placement cell conducting a program titled "How to crack GATE/PG-CET" at our college on 06-01-2020 to 10-01-2020. We strongly encourage all students to actively participate in this training program.

HOD's, delegate the class in-charges of each department for the smooth conduct of the program.

VENUE: Seminar Hall

PRINCIPAL

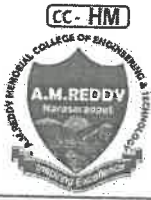
Principal

A.M REDDY MEMORIAL COLLEGE OF
ENGINEERING & TECHNOLOGY
PETLURIVARI PALEM
Narasaraopet (Mdi), Guntur(Dt)

Copy to:

Signature of all HOD'S								TPO	LIBRARY	OFFICE
CIVIL	CSE	EEE	ECE	AGRI	MECH	S&H	MBA			

Principal
A.M REDDY MEMORIAL COLLEGE OF
ENGINEERING & TECHNOLOGY
PETLURIVARI PALEM
Narasaraopet (Mdi), Guntur (Dt)



A.M. REDDY MEMORIAL COLLEGE OF ENGINEERING AND TECHNOLOGY

Approved by AICTE, New Delhi, Affiliated to JNTUK-Kakinada

Web : www.amreddyengineering.ac.in, E.mail: principal.amreddyengineering@gmail.com
VINUKONDA ROAD, PETLURIVARIPALEM(POST), NARASARAOPET, GUNTUR (DIST), ANDHRA PRADESH, PIN:522601, 08647-247190.

PROGRAMME REPORT

Date: 10-01-2020

Name of the programme: "How to crack GATE/PG-CET"

Date: 06-01-2020 to 10-01-2020. (Five days)

Resource Person Details:

Name : Dr. G. Bhaskar Reddy
Designation : Associate Professor
Place : Nalanda Institute of Engineering & Technology
Contact Number : 9491001118
Mail.Id : drgbhaskarreddy@gmail.com

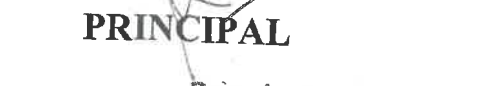
No of students participated: 200

The training and placement cell of A. M. Reddy Engineering College conducted a five days training programme on "How to crack GATE/PG-CET" at our college. This programme was inaugurated by our principal with a technical speech. After the speech, the guest speaker continued about the GATE and PG-CET classes.

All B. Tech third year students attended the programme. The student's raised the numerous questions related GATE exam with the speaker. Both the speaker and students shared their views throughout the Sessions. Finally, the session concluded with a vote of thanks by coordinator.


Co-ordinator


Principal
A.M REDDY MEMORIAL COLLEGE OF
ENGINEERING & TECHNOLOGY
PETLURIVARI PALEM
Narasaraopet (M.D), Guntur (D)


PRINCIPAL
Principal
A.M REDDY MEMORIAL COLLEGE OF
ENGINEERING & TECHNOLOGY
PETLURIVARI PALEM
Narasaraopet (M.D), Guntur (D)

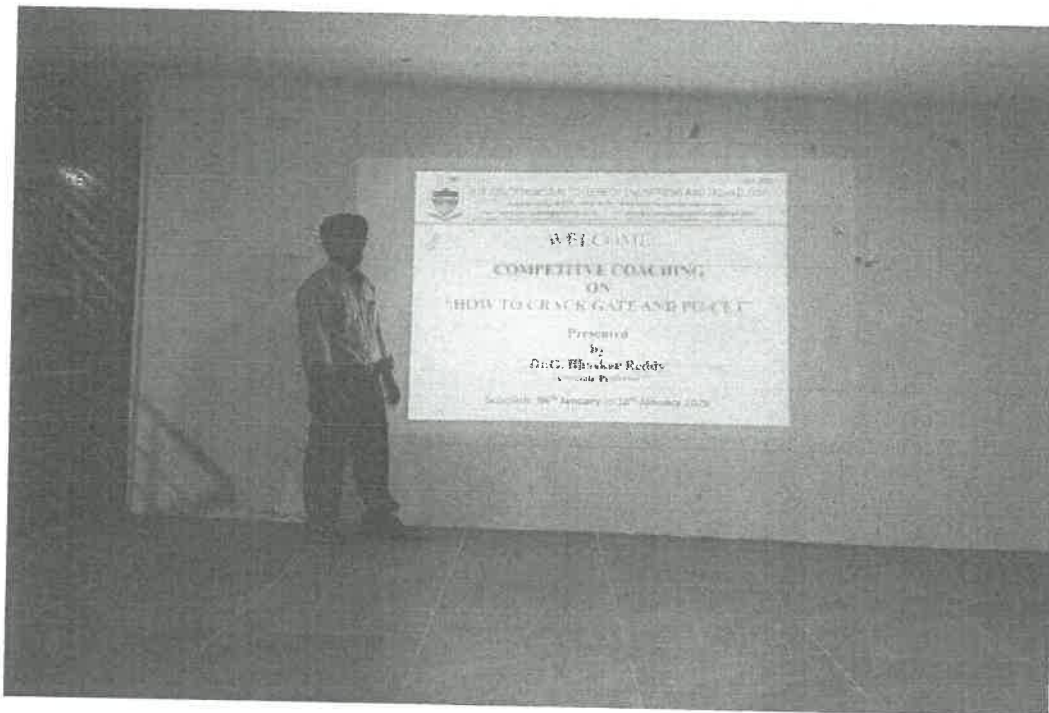


ESTD : 2007

A.M. REDDY MEMORIAL COLLEGE OF ENGINEERING AND TECHNOLOGY

Approved by AICTE, New Delhi, Affiliated to JNTUK-Kakinada

Web : www.amreddyengineering.ac.in, E.mail:principal.amreddyengineering@gmail.com
VINUKONDA ROAD, PETLURIVARIPALEM(POST), NARASARAOPET, GUNTUR (DIST), ANDHRA PRADESH, PIN:522601, 08647-247190.



Dr. G. Bhaskar Reddy giving introduction and explaining about the GATE & PG CET Exam on the date of **06-01-2020**

Prasanna
Co-ordinator

Principal
A.M REDDY MEMORIAL COLLEGE OF
ENGINEERING & TECHNOLOGY
PETLURIVARI PALEM
Narasaraopet (Mdl), Guntur (Dt)

Principal
PRINCIPAL

A.M REDDY MEMORIAL COLLEGE OF
ENGINEERING & TECHNOLOGY
PETLURIVARI PALEM
NARASARAOPET, GUNTUR (DIST), ANDHRA PRADESH



FEEDBACK FORM FOR COMPETITIVE COACHING PROGRAM

We appreciate your participation in our Competitive coaching program. Your feedback is valuable to us as it helps us improve the quality of our programs. Please share your opinions with us.

Basic Information:

Your Name (Optional) :----- B. V. Surya -----

Date of the Program :----- 10-1-2020 -----

Department :----- Agricultural Engineering -----

1. How do you rate the content of the Competitive coaching program overall?
 - Excellent
 - Very Good
 - Good
 - Fair
 - Poor
2. Were the sessions well-planned and organized?
 - Yes
 - No
 - Not Sure
3. How do you rate the performance of the instructors?
 - Excellent
 - Very Good
 - Good
 - Fair
 - Poor
4. Did the instructors encourage active involvement and interaction?
 - Yes
 - No
 - Not Sure
5. How much do you think the Competitive coaching program will help you in your academic and professional life?
 - Extremely Helpful
 - Very Helpful
 - Somewhat Helpful
 - Not Helpful
6. How satisfied are you with the Competitive coaching program overall?
 - Very Satisfied
 - Satisfied
 - Neutral
 - Dissatisfied
7. Any other comments or suggestions?----- We need more -----
----- Explanation: -----

Thank you for completing this feedback form. Your input is important to us in enhancing our future competitive coaching programs.

Principal
A.M. REDDY MEMORIAL COLLEGE OF
ENGINEERING & TECHNOLOGY
PETLURIVARI PALEM
Narasaraopet (Mdl), Guntur(Dr)



FEEDBACK FORM FOR COMPETITIVE COACHING PROGRAM

We appreciate your participation in our Competitive coaching program. Your feedback is valuable to us as it helps us improve the quality of our programs. Please share your opinions with us.

Basic Information:

Your Name (Optional) :----- Mr. Vamsi -----
Date of the Program :----- 10-01-2020 -----
Department :----- CSE -----

- 1. How do you rate the content of the Competitive coaching program overall?**
 - Excellent
 - Very Good
 - Good
 - Fair
 - Poor
- 2. Were the sessions well-planned and organized?**
 - Yes
 - No
 - Not Sure
- 3. How do you rate the performance of the instructors?**
 - Excellent
 - Very Good
 - Good
 - Fair
 - Poor
- 4. Did the instructors encourage active involvement and interaction?**
 - Yes
 - No
 - Not Sure
- 5. How much do you think the Competitive coaching program will help you in your academic and professional life?**
 - Extremely Helpful
 - Very Helpful
 - Somewhat Helpful
 - Not Helpful
- 6. How satisfied are you with the Competitive coaching program overall?**
 - Very Satisfied
 - Satisfied
 - Neutral
 - Dissatisfied
- 7. Any other comments or suggestions?**----- OK. its helpful -----

Thank you for completing this feedback form. Your input is important to us in enhancing our future competitive coaching programs.


Principal
A.M REDDY MEMORIAL COLLEGE OF
ENGINEERING & TECHNOLOGY
PETLURIVARI PALEM
Narasaraopet (Mdl), Guntur, Dr.



FEEDBACK FORM FOR COMPETITIVE COACHING PROGRAM

We appreciate your participation in our Competitive coaching program. Your feedback is valuable to us as it helps us improve the quality of our programs. Please share your opinions with us.

Basic Information:

Your Name (Optional) : Ch. Sai

Date of the Program : 10-01-2020

Department : Mech

1. How do you rate the content of the Competitive coaching program overall?

- Excellent
- Very Good
- Good
- Fair
- Poor

2. Were the sessions well-planned and organized?

- Yes
- No
- Not Sure

3. How do you rate the performance of the instructors?

- Excellent
- Very Good
- Good
- Fair
- Poor

4. Did the instructors encourage active involvement and interaction?

- Yes
- No
- Not Sure

5. How much do you think the Competitive coaching program will help you in your academic and professional life?

- Extremely Helpful
- Very Helpful
- Somewhat Helpful
- Not Helpful

6. How satisfied are you with the Competitive coaching program overall?

- Very Satisfied
- Satisfied
- Neutral
- Dissatisfied

7. Any other comments or suggestions? It was very useful to

Thank you for completing this feedback form. Your input is important to us in enhancing our future competitive coaching programs.

(Signature)
Principal



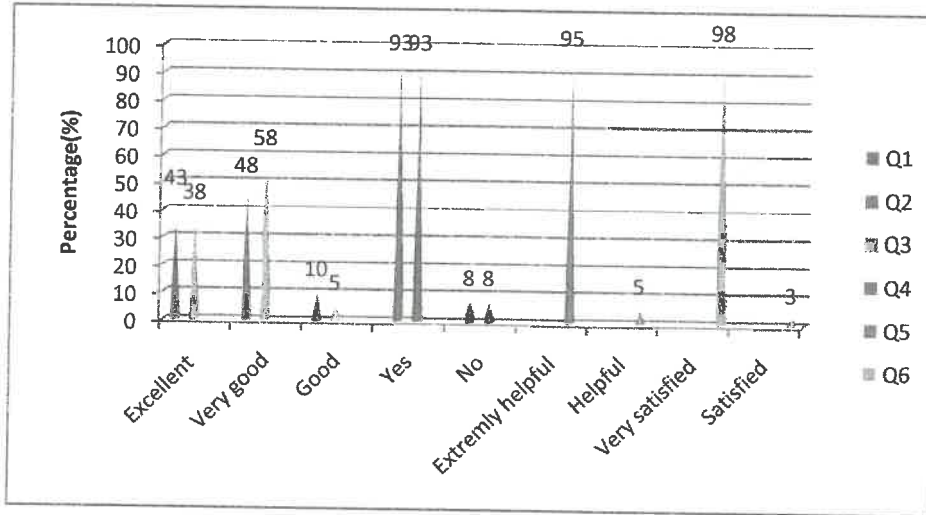
ESTD : 2007

A.M. REDDY MEMORIAL COLLEGE OF ENGINEERING AND TECHNOLOGY

Approved by AICTE, New Delhi, Affiliated to JNTUK-Kakinada

Web : www.amreddyengineering.ac.in, E.mail: principal.amreddyengineering@gmail.com
VINUKONDA ROAD, PETLURIVARIPALEM(POST), NARASARAOPET, GUNTUR (DIST), ANDHRA PRADESH, PIN:522601, 08647-247190.

Competitive coaching program on "How to crack GATE/PG-CET" Question wise student feedback percentage 2019-20



Principal
A.M REDDY MEMORIAL COLLEGE OF
ENGINEERING & TECHNOLOGY
PETLURIVARI PALEM
Narasaraopet (Mdl), Guntur(Dr)